

m2M meeting, 8/8/11

- Project personnel update
 - Postdocs: FD has interviewed 2/4 finalists and will meet with 3 this week at ESA. Final decision by Friday.
 - Other research assistants: Andy Shepard, Sean McKnight, Andy MacDonald
- Weather equipment order: completed. Most of the equipment has been delivered
 - Supplies for exclosures
- Field site status
 - Teakettle – review of garden locations; suggested strategy for hobo deployment
 - Big Sur
 - Sedgwick
 - SJER
 - Tejon Ranch as an option
- Schedule Aug-Sept
 - Aug 8-12 No fieldwork scheduled
 - Aug 15-26 Big Sur (tentative)
 - Sept 5 -16 Sedgwick (or SJER)
 - Sept 19-30 SJER (or Sedgwick, also Teakettle?)
- Other items?

Postdoc finalists

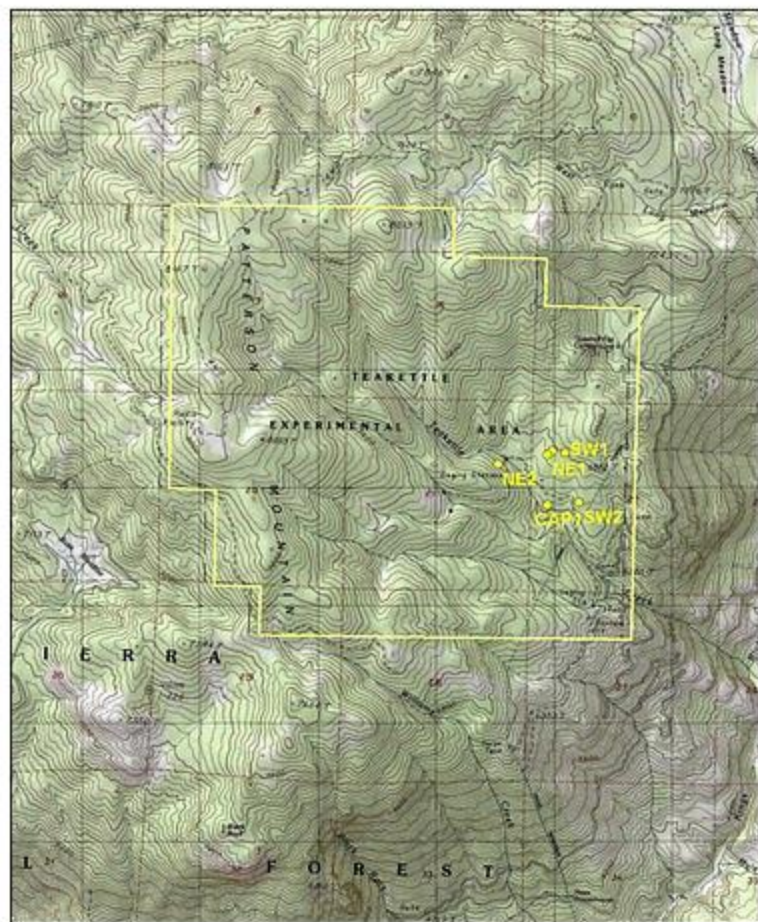
- Lynn Sweet, UCR
 - Jodie Holt, advisor
 - Dissertation Title: “Environmental and community factors influencing the distribution of *Pennisetum setaceum* in California.”
- Artem Treyger, SUNY College of Environmental Science and Forestry
 - Chris Nowak, advisor
 - Dissertation topic: “Nowak, C.A. and A.L. Treyger, (in print). Changes in tree seedling composition within powerline corridors appear to be consistent with climatic changes in New York State. *Global Change Biology*”
- David McKenzie: U. of Wyoming
 - Advisor: Dan Tinker
 - Dissertation Title: *Western red cedar (Thuja plicata) in Glacier National Park: Growth and regeneration*
- Bill Anderegg: Stanford U.
 - Advisor: Chris Field
 - Dissertation topic: Quaken aspen mortality in the southern Rockies in relation to recent climate change

Teakettle experience

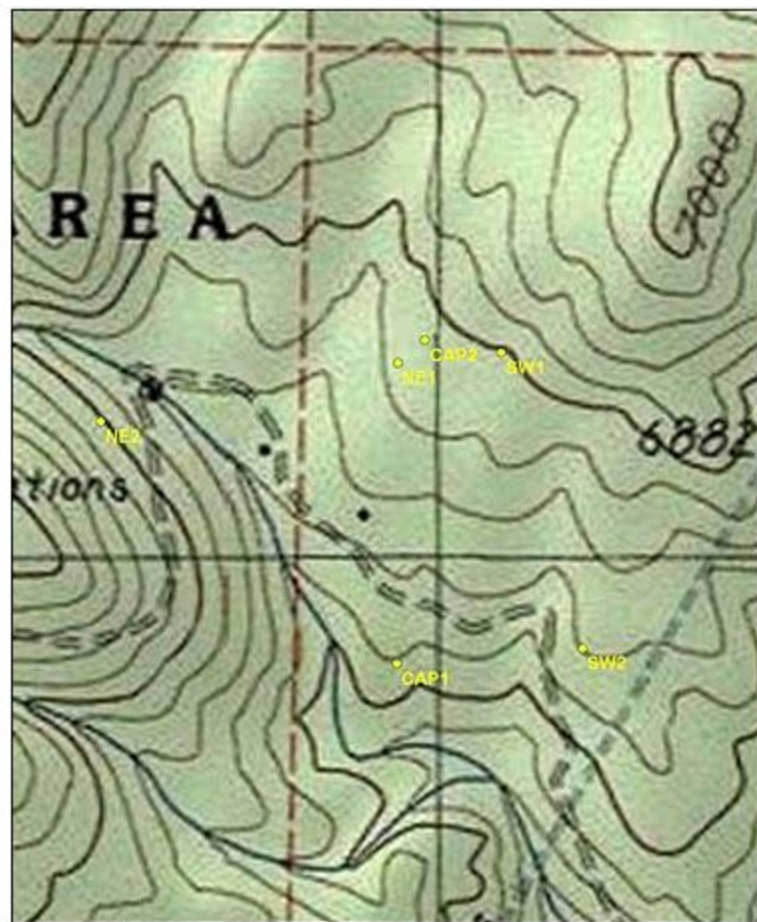
- Worked out exclosure design and installation
- Discussed and implemented a strategy for locating weather stations
- Reality check on deployment of dataloggers
- Current status
 - 6 gardens mostly finished
 - Still need to deploy weather equipment
 - Seed collection and sowing has to happen late Sept/early Oct.



Photos by FD, JF



0 750 1,500 3,000 Meters



0 125 250 500 Meters

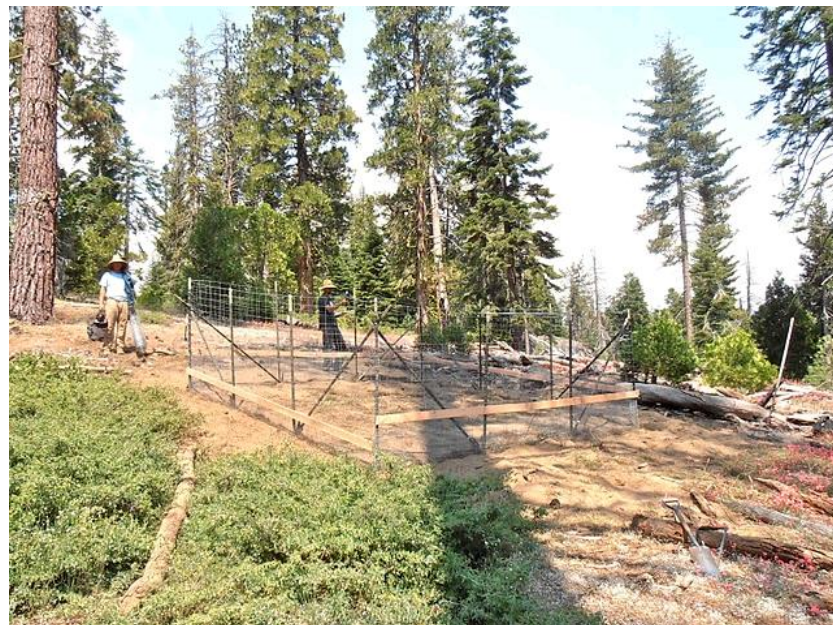


CAP1

NE2



SW2



NE1



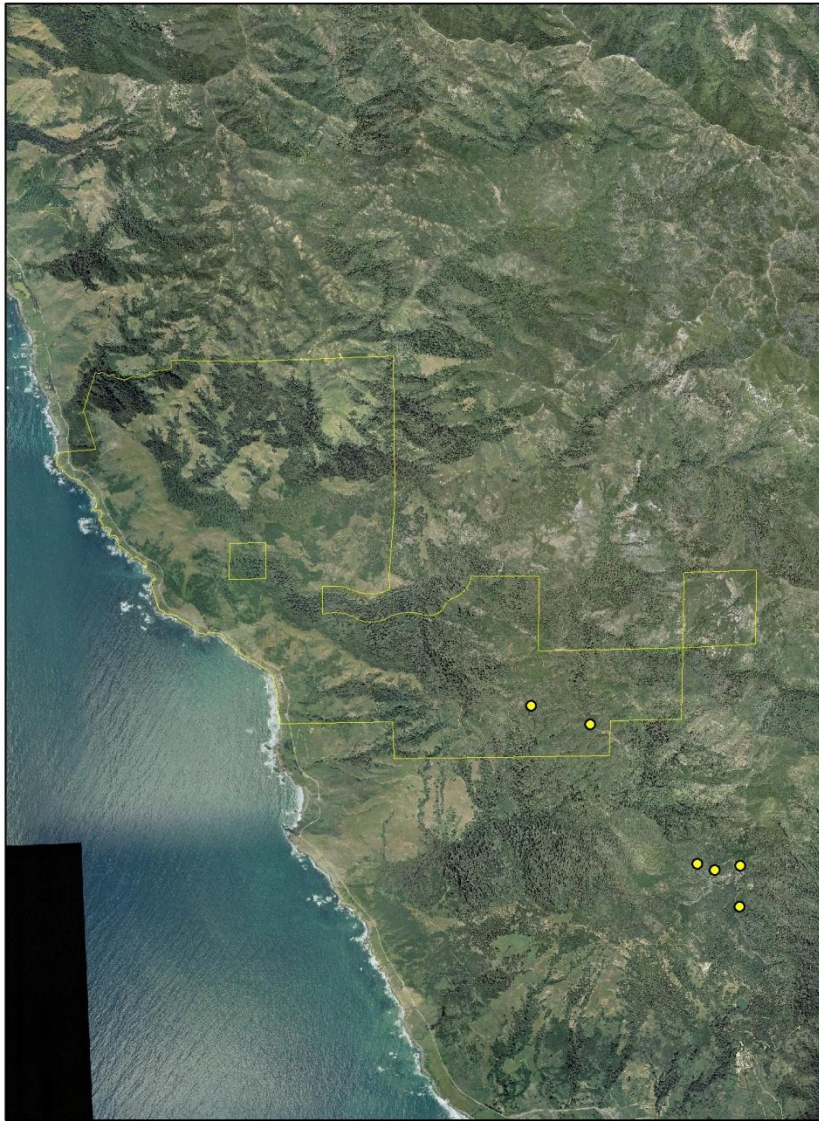
CAP2



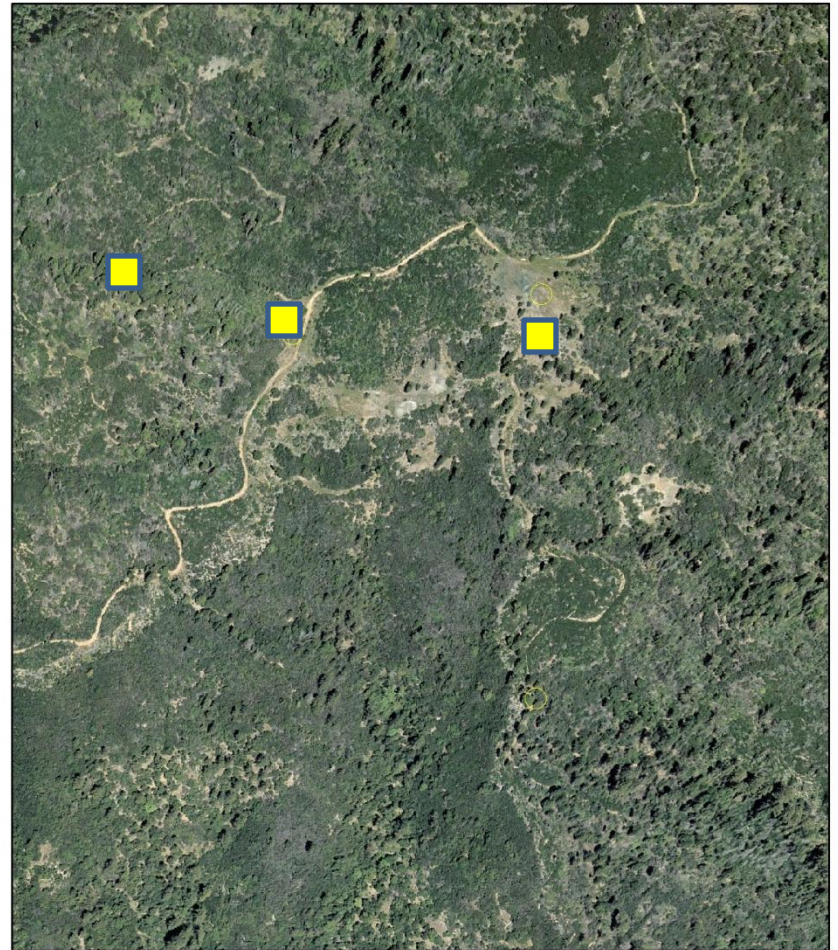
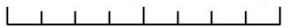
SW1

Big Creek Reserve/Circle M Ranch

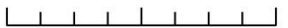
- LH and FD visited on 8/4, Circle M ranch a possibility
- Tough to get to the site, but easy access from the site to garden locations
- Extremely different setting than Teakettle: 900 m lower in elevation, black oak rare, tanoak, oak and *Ceanothus thyrsiflorus* abundant



0 750 1,500 3,000 Meters



0 75 150 300 Meters



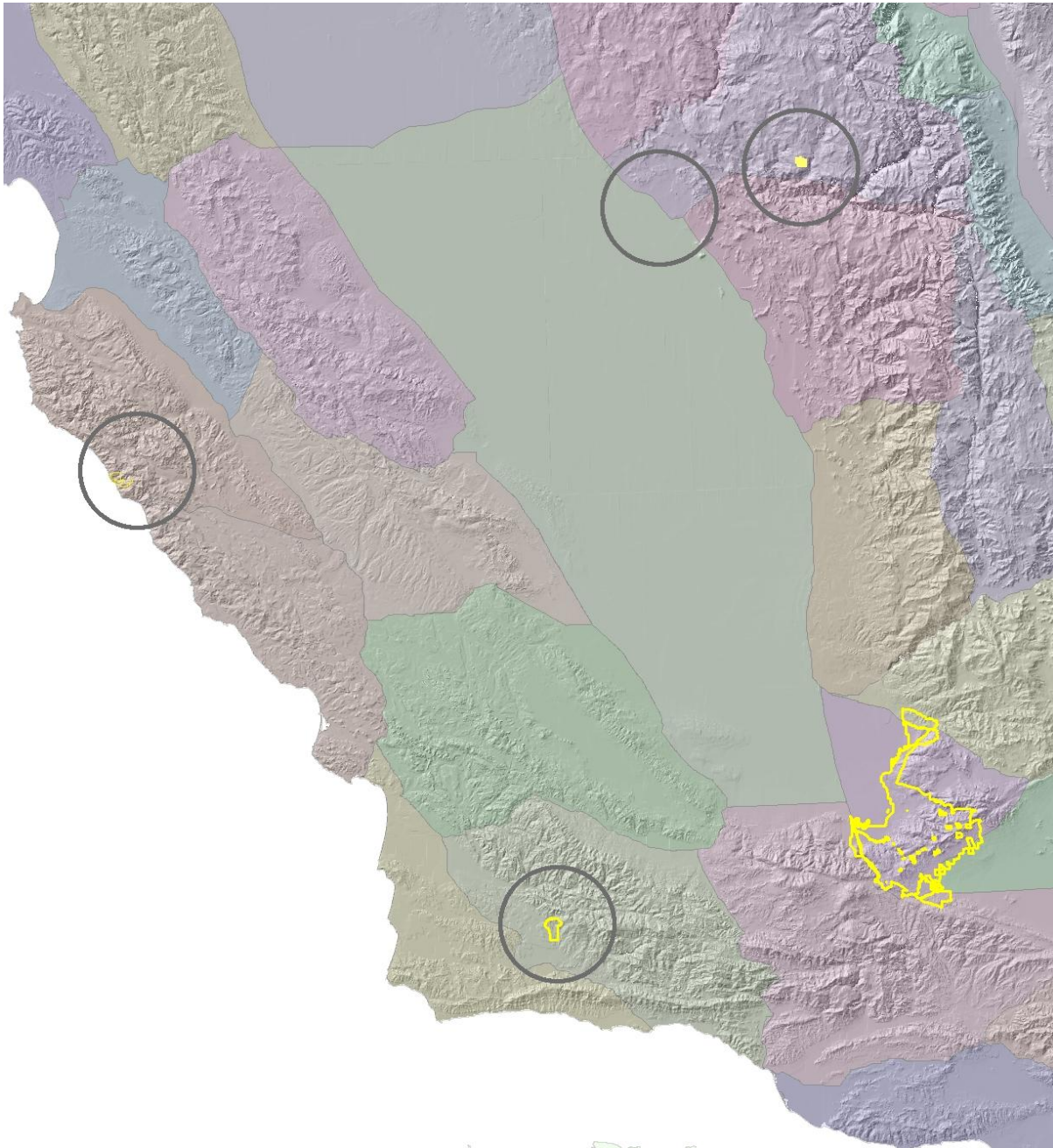








Big Sur vs Teakettle, apples vs. artichokes?



Tejon Ranch







Next steps

- Hire postdocs to begin 9/1
- Confer with Tejon Ranch? Try again with the Forest Service? Stay with Big Sur?
- Model accessibility and lay out hobo design for Teakettle, SJER, and other candidate sites.
- Work on scale paper with JF and Maki

Next GoToMeeting conference call

- Sept 12 or Sep 14, 1 PM?